

7P Hex IP



Light Efficiency:

28 Lumen/Watt

Light Quality:

CRI: 64.5

Color Temperature:

23686 K

Output: 1643 lm

Peak: 8723 cd

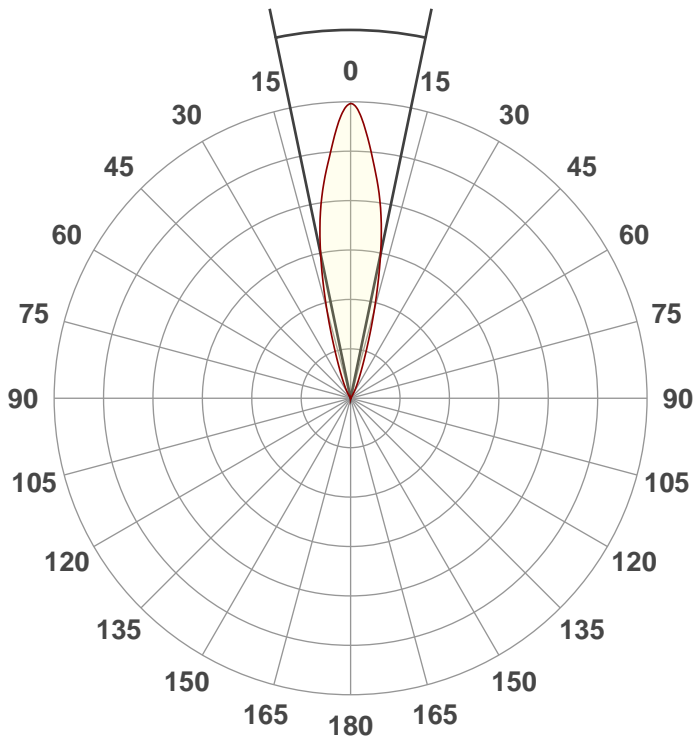
Power: 58.9 W

PF: 0.99



Beam Angle

23.5°



Test:

Full On

Date:

6/20/2018

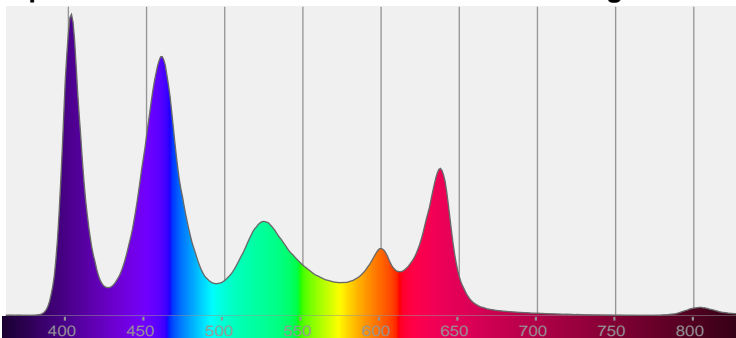
Note:



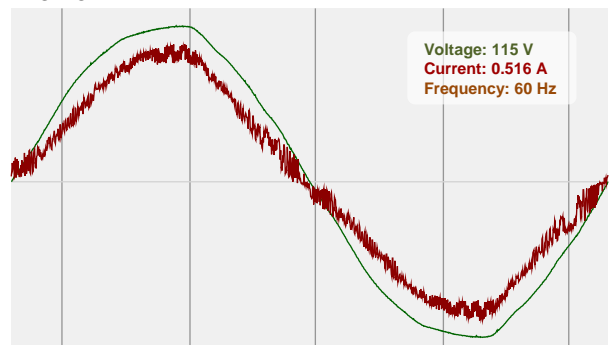
CIE 1931
x: 0.271
y: 0.237

Spectra

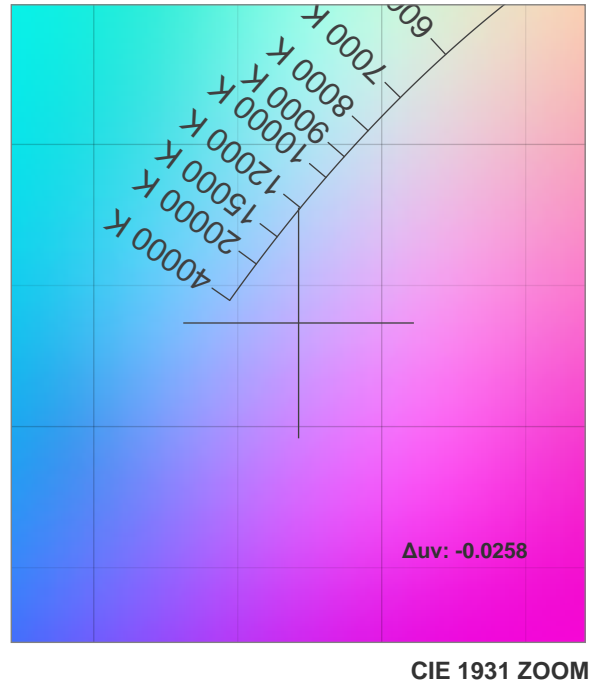
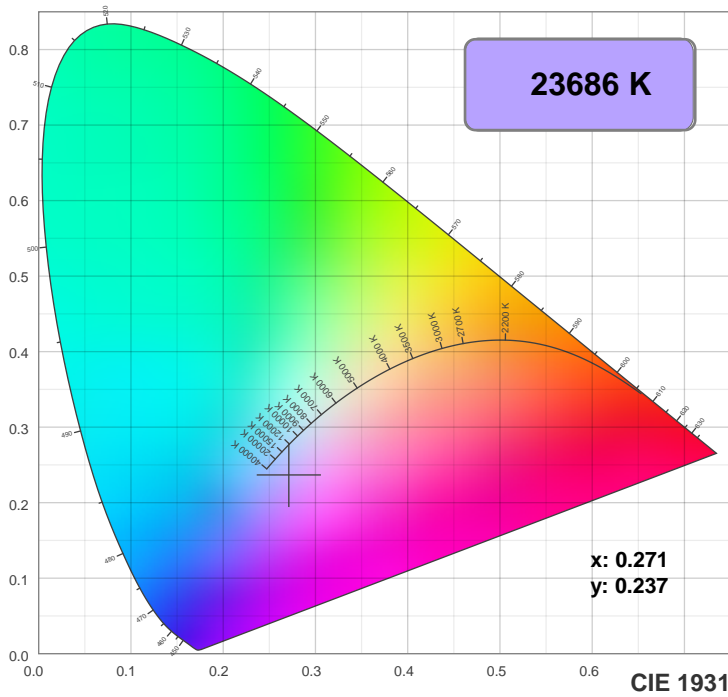
Dominant Wavelength: 432nm



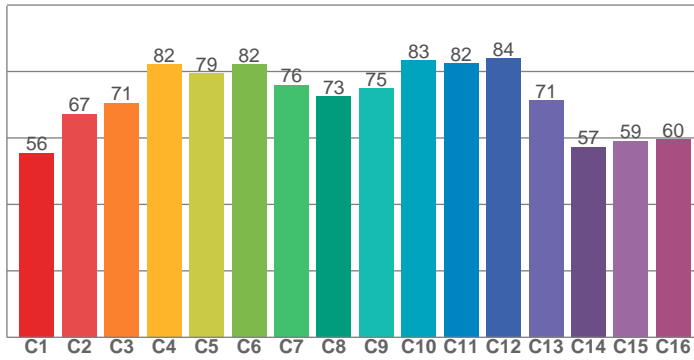
Power



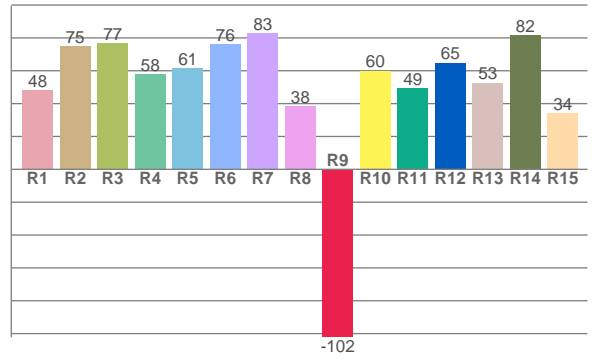
Color Details



TM30: 73.8



CRI: 64.5 (R1-R8)



CRI R values, only R1-R8 are used to calculate final CRI value

R1	R2	R3	R4	R5	R6	R7	R8	R9	R10	R11	R12	R13	R14	R15
48.0	75.0	76.7	57.6	61.5	76.0	82.7	38.3	-102.3	60.0	49.3	64.9	52.7	81.6	34.0

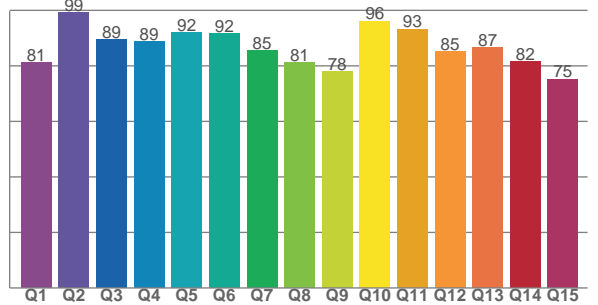
TM30 C values, 16 binned values out of total of 99 C values

C1	C2	C3	C4	C5	C6	C7	C8	C9	C10	C11	C12	C13	C14	C15	C16
55.5	67.2	70.5	82.1	79.3	82.1	75.9	72.5	74.9	83.3	82.4	83.9	71.3	57.3	59.2	59.6

CQS Q values

Q1	Q2	Q3	Q4	Q5	Q6	Q7	Q8	Q9	Q10	Q11	Q12	Q13	Q14	Q15
81.1	99.2	89.4	88.6	92.0	91.5	85.5	81.2	78.0	96.1	93.2	85.1	86.6	81.5	75.2

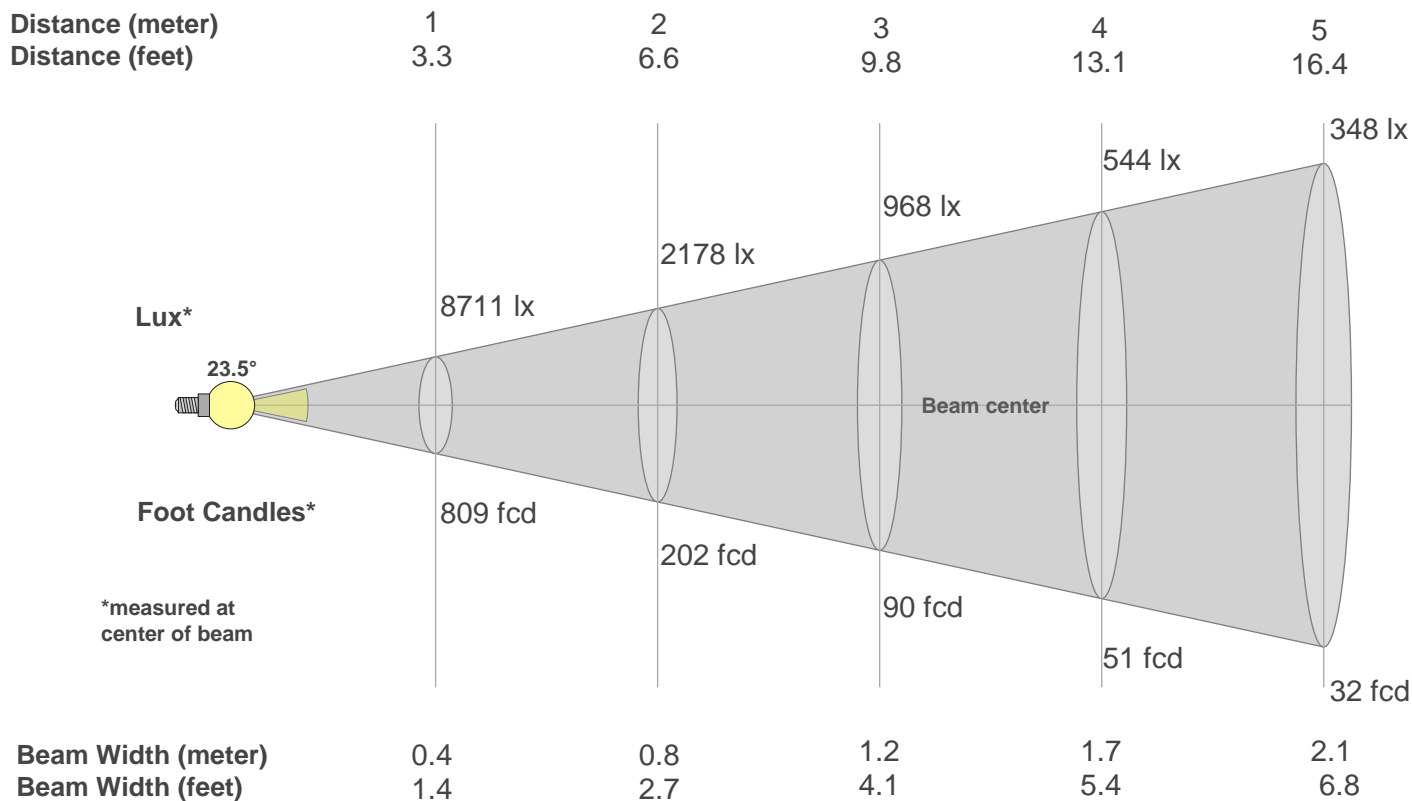
CQS: 85.4



Color Parameters

Color Temperature	Color Rendering Index	Red Component	Color Fidelity	Color Gamut	Color Quality Scale	Color Coordinate CIE 1931	Color Coordinate CIE 1931	Color Coordinate	Color Coordinate	Color Deviation from Black Body
CCT	CRI	CRI R9	TM30 Rf	TM30 Rg	CQS	x	y	u	v	Δuv
23686 K	64.5	-102.3	73.8	112.6	85.4	0.271	0.237	0.205	0.268	-0.0258

Beam Details



Beam Intensities from 1-20m

m	1	2	3	4	5	6	7	8	9	10	11	12	13	14	15	16	17	18	19	20
ft	3.3	6.6	9.8	13.1	16.4	19.7	23	26.2	29.5	32.8	36.1	39.4	42.7	45.9	49.2	52.5	55.8	59.1	62.3	65.6
lx	8711	2178	968	544	348	242	178	136	108	87	72	60	52	44	39	34	30	27	24	22
fcd	809.3	202.3	89.9	50.6	32.4	22.5	16.5	12.6	10	8.1	6.7	5.6	4.8	4.1	3.6	3.2	2.8	2.5	2.2	2

Intensities in 0° C-plane

0°	2°	4°	6°	8°	10°	12°	14°	16°	18°	20°	22°	24°	26°	28°	30°	32°	34°	36°	38°
8711	8349	7578	6818	6073	5218	4230	3208	2278	1548	1055	743	527	366	243	154	96	67	44	33
100%	96%	87%	78%	70%	60%	49%	37%	26%	18%	12%	9%	6%	4%	3%	2%	1%	1%	1%	0%

Intensities in 90° C-plane

0°	2°	4°	6°	8°	10°	12°	14°	16°	18°	20°	22°	24°	26°	28°	30°	32°	34°	36°	38°
8711	8349	7578	6818	6073	5218	4230	3208	2278	1548	1055	743	527	366	243	154	96	67	44	33
100%	96%	87%	78%	70%	60%	49%	37%	26%	18%	12%	9%	6%	4%	3%	2%	1%	1%	1%	0%

Intensities in 180° C-plane

0°	2°	4°	6°	8°	10°	12°	14°	16°	18°	20°	22°	24°	26°	28°	30°	32°	34°	36°	38°
8711	8373	7628	6838	6084	5224	4227	3199	2285	1558	1065	749	539	378	251	161	99	69	49	35
100%	96%	88%	78%	70%	60%	49%	37%	26%	18%	12%	9%	6%	4%	3%	2%	1%	1%	1%	0%

Intensities in 270° C-plane

0°	2°	4°	6°	8°	10°	12°	14°	16°	18°	20°	22°	24°	26°	28°	30°	32°	34°	36°	38°
8711	8373	7628	6838	6084	5224	4227	3199	2285	1558	1065	749	539	378	251	161	99	69	49	35
100%	96%	88%	78%	70%	60%	49%	37%	26%	18%	12%	9%	6%	4%	3%	2%	1%	1%	1%	0%

Beam Angle 50%	Field Angle 10%	Cutoff Angle 2,5%	Intensity Ratio in 120° Cone	Intensity Ratio in 90° Cone
23.5°	42.2°	57.2°	99.9%	99.6%